





107 Oxford Road, Macclesfield, Cheshire SK11 8JG

Tucked away just moments from Macclesfield town centre, this elegant Georgian-style detached residence, built in the 1970s with classic brick elevations, perfectly balances timeless character with modern comfort, all within easy reach of excellent schools and local amenities. A rare opportunity, this distinctive home offers both impressive presence and a true sense of individuality.

The accommodation is generously proportioned, filled with natural light, and is highly versatile. The ground floor features an entrance hall, cloakroom/W.C., a spacious lounge, and a dining room opening onto a sun terrace, ideal for enjoying morning coffee. The lower ground floor provides exceptional flexibility, comprising a family room, study, breakfast kitchen, additional WC, and utility room, along with a useful store giving access to the boiler room and double garage.

To the first floor, the principal bedroom benefits from en-suite facilities, complemented by three further double bedrooms and a well-appointed family bathroom. The property is further enhanced by gas-fired central heating and uPVC double glazing throughout.

Set well back from the road and screened by mature trees and hedging, the property enjoys a high degree of privacy. A generous driveway provides ample off-road parking and access to the double garage. The rear garden is a standout feature, an impressive outdoor retreat with an expansive lawn bordered by established trees, shrubs, and hedging. A block-paved patio with pergola offers the perfect setting for alfresco dining and entertaining, while multiple external power points provide scope for garden lighting or outdoor appliances. Completing this exceptional space is a beautifully crafted timber summer house, fully equipped with power, lighting, and heating.

Macclesfield is a thriving business centre and market town with excellent local amenities and a choice of modern leisure and sports facilities. The town is situated on the Cheshire Plain, at the edge of the Peak District National Park with its picturesque beauty and extensive walks.

Residents of Macclesfield have access to good transport links including national motorways, major roads and train networks, including the West Coast Line direct to London. Manchester International Airport is only thirteen miles away by road. Greater Manchester is within comfortable daily travelling distance and there are regular bus services to neighbouring towns.

From the top end of Chestergate proceed along Chester Road and turn left at the roundabout by the Regency Hospital into Oxford Road and the property can be found on the left hand side.

Viewing: By appointment with Holden and Prescott 01625 422244

107 Oxford Road, Macclesfield, Cheshire SK11 8JG**Ground Floor****Entrance Hall**

Solid wood front door with fanlight over. Thermostatic control panel. Ceiling cornice. Spindle balustade to the staircase. Large storage cupboard. Double glazed windows to two elevations. Double panelled radiator.

Cloakroom/W.C.

Pedestal washbasin with mixer tap. High suite W.C. Partially tiled walls. Window. Chrome heated towel rail.

Lounge

28'02 x 18'10

Living flame gas fire set within a marble fireplace with timber surround and mantel. Ceiling cornice. Wall light points. uPVC double glazed windows. Wood effect laminate flooring. Two double panelled radiators. Double doors opening onto the Dining Room.

Dining Room

27'05 x 13'04

Ceiling cornice. Two ceiling roses. Electrically operated dumb-waiter. Spindle balustrade to the staircase. Wood effect laminate flooring. Two uPVC double glazed windows to side elevations. Three double panelled radiators. uPVC door opening onto the Sun Terrace.

Sun Terrace

22'04 x 16'10

Enclosed within attractive wrought-iron railings with a gate and steps down to the garden.

Lower Ground Floor**Hall**

Spindle balustrade to the staircase. Access to the Store Room.

107 Oxford Road, Macclesfield, Cheshire SK11 8JG

Family Room

18'07 x 18'06

Fitted storage cupboards. Recessed spotlighting. T.V. aerial point. Wood effect laminate flooring. uPVC double glazed window. uPVC door opening to the side elevation. Double doors with glazing opening to the Study. Double panelled radiators.

Study

18'05 x 8'11

Dado rail. Wall light points. Wood effect flooring. Single panelled radiator.

Breakfast Kitchen

26'07 x 13'00

Single drainer composite sink unit with mixer tap and base unit below. An additional range of matching base and eye level units with wood block work surfaces and tiled splashbacks. Kitchen island with wood block surface housing base level units and wine rack. Tiled recess with space for a gas range style cooker. Plumbing for dishwasher. Space for an American style fridge/freezer. Fitted shelving. Electrically operated dumb-waiter. Recessed spotlighting. Slate flooring. Enclosed staircase leading to the Dining Room. uPVC double glazed windows to two elevations. Double panelled radiators.

Utility

14'00 x 5'11

Single drainer stainless steel double bowl sink unit with mixer tap and base unit below. An additional range of base and eye level units with work surfaces and tiled splashbacks. Plumbing for washing machine. Space for a tumble dryer. Quarry tiled flooring. uPVC double glazed window. Composite door with glazing inset opening to the side elevation. Internal access to the Garage.

W.C.

Hand washbasin with mixer tap and tiled splashbacks. Low suite W.C. Quarry tiled flooring. Window.

Garage

16'10 x 15'11

Electrically operated up and over door. Power and light. Window. Door to main property.

107 Oxford Road, Macclesfield, Cheshire SK11 8JG**Store Room**

16'04 x 8'00 max
Power and light.

Boiler Room

8'00 x 7'01
Power and light. Utility meters. Vaillant central heating and domestic hot water boiler.

First Floor**Landing**

Handrail and spindle balustrade to the staircase. Ceiling cornice. Deep skirting boards. Airing cupboard housing the hot water cylinder. Loft access. Two uPVC double glazed windows. Double panelled radiator.

Master Bedroom

27'03 x 13'05
Floor to ceiling fitted wardrobes with integral chest of drawers providing ample storage space. Ceiling cornice. Recessed spotlighting. Deep skirting boards. Electrically operated dumb-waiter. uPVC double glazed windows to two elevations. Two double panelled radiators.

En-suite

The white suite comprises a fully tiled cubicle with thermostatic rainfall shower and additional shower attachment, a hand washbasin with mixer tap and vanity storage below and a low suite W.C. Recessed spotlighting. Fully tiled walls. uPVC double glazed window. Chrome heated towel rail.

Bedroom Two

15'06 x 10'00
Ceiling cornice. Deep skirting boards. Recessed spotlighting. uPVC double glazed window. Double panelled radiator.

Bedroom Three

12'02 x 10'00
Wood effect laminate flooring. uPVC double glazed windows to two elevations. Single panelled radiator.

107 Oxford Road, Macclesfield, Cheshire SK11 8JG

Bedroom Four

15'06 x 6'06

Ceiling cornice. Deep skirting boards. Recessed spotlighting. uPVC double glazed window. Single panelled radiator.

Family Bathroom

The white suite comprises a panelled bath with central mixer tap, a fully tiled cubicle with thermostatic rainfall shower with jets, his and hers hand washbasins with mixer taps and splashbacks and a low suite W.C. Two wall-mounted mirror-fronted cabinets. Electric shaver point. Extractor fan. Partially tiled walls. uPVC double glazed window. Vertical chrome heated towel rail.

Outside

Gardens

The property is set behind a generous driveway offering ample off-road parking and direct access to the garage. The extensive gardens are a standout feature, comprising a lawn, a variety of mature trees, shrubs, and hedging, and a block-paved patio. Additional features include multiple external power points, providing flexibility for garden lighting and outdoor appliances.

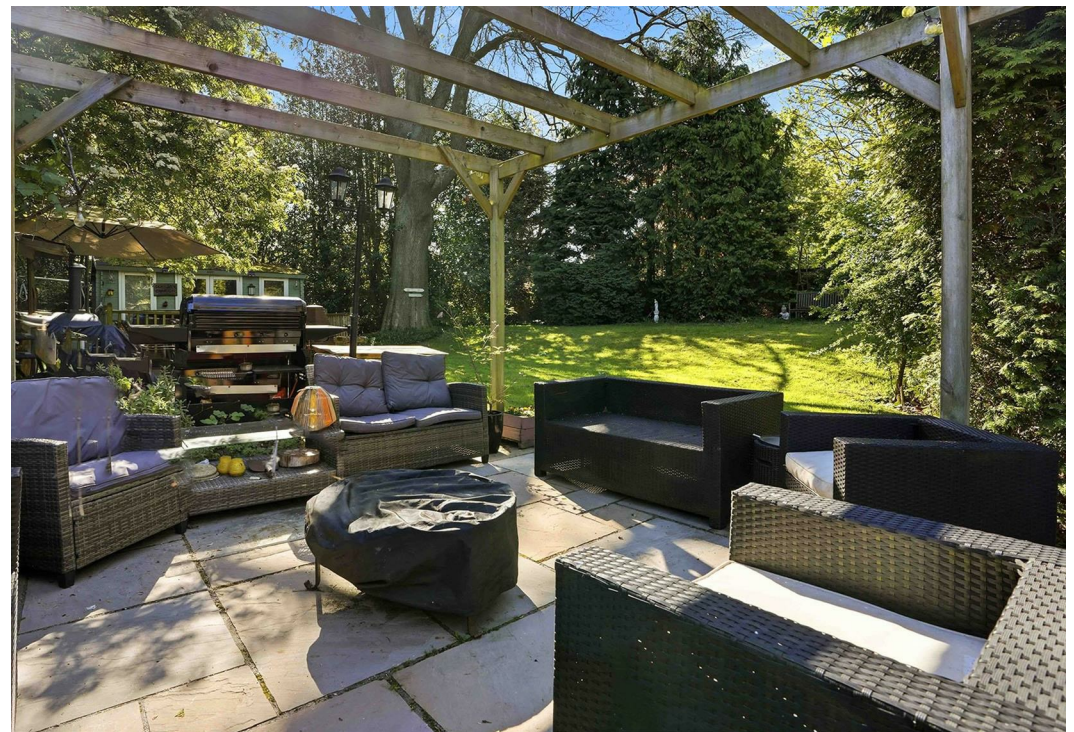
Sun House

An attractive timber-built sun house, fully equipped with power, lighting, and heating.

Freehold

Offers In The Region Of £800,000

HOLDEN & PRESCOTT

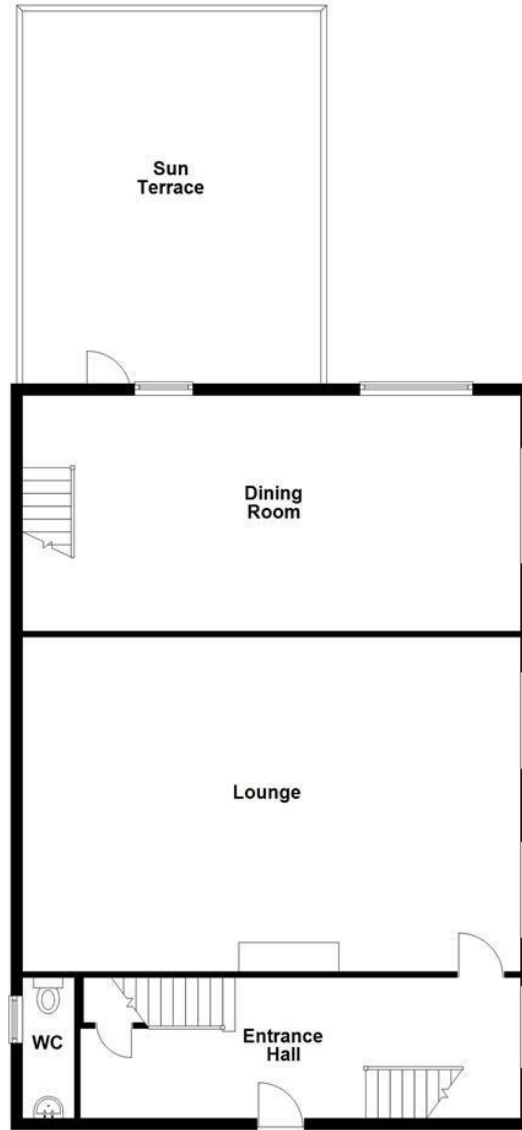




Lower Ground Floor



Ground Floor



First Floor

